

NEWSLETTER OF THE GROSSE ILE ROTARY CLUB

Box 125, Grosse Ile, MI 48138

Club website: www.gircweb.org

District website: www.rotary6400.org

FOR MEETINGS OF: 9/17/2009 & 9/24/2009

Board Members 2009 – 2010

President	Dale Klemans
President Elect	Charlie Worden
Secretary	Bambang Soedarjatno
Treasurer	Ron Peltier
Past President	Ted Aller



Board Members At Large 2009 – 2010

Dave Sims
Roberto Sanchez
Allen Hickman

PROGRAMMING SCHEDULE:

Oct 1: Loren Hoffman- A Kentucky Derby presentation
Oct 8: Club Assembly- Chairpersons report on activities plus any other club business
Oct 15: Jim Stewart, Grosse Ile High School Principal
Oct 22: James Penn- Being laid off and what is being done to assist that situation-----
Board meeting; 5:30 PM, GIGCC
Oct 29: John Williams, Del Ray Community House and Pete Rock discussing progress at Del Ray

JUST A WORD FROM.....

Many thanks to all of you for participating in the Rotary Island Showcase this year! It was a beautiful day and I have already heard from many of you that you would like to return next year. We are still working on figuring out ways to increase the crowds, and would welcome any of your thoughts and ideas. Next year will be another Garden Club Home Tour and they would like to partner more with the Showcase to increase attendance at both events. Also, next year the Showcase will fall on September 11, and we would like to include tributes to the Police and Fire Department as well as the military. Thank you again, and we look forward to seeing you at Rotary Island Showcase 2010!

Deborah Green
Chairman
Rotary Island Showcase

▶▶▶▶ **“FOR YOUR ISLAND” OR FYI HAS BEEN LAUNCHED!!!!**

On 9-16-09 John Strain launched FYI. FYI has 44 members. See the attachment for the invitation to join, John sent it to 64 addresses.

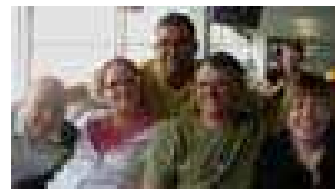
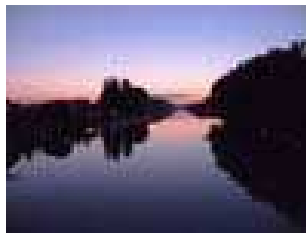
This was a monumental effort achieved after John spent countless hours of receiving responses, cataloging member information into data bases, designing a workable system and patiently responding graciously to inquiries regarding all aspects of the project.

John has immense technical skills and innovative techniques that he put to great use for the benefit of the community and his excellent public relations expertise continues to expand for the greater good of GI Rotary. He deserves an "atta boy" from all 40 of us. Make sure you deliver yours.

Dale

PROGRAM OF 9/24/2009

Group Study Exchange to Hungary - 2009



GSE Team Leader Rick Caron, Megan Callewaert, Team Member, Jenni Cammaert, Team Member, Vinicius Brienol De Souza, Team Member.

These photos show a glimpse of the wonderful experience of business people immersing themselves in a month-long vocational & cultural experience. This experience is completely funded by The Rotary International Foundation.

About the GSE program

The Rotary Foundation's Group Study Exchange (GSE) program is a unique cultural and vocational exchange opportunity for businesspeople and professionals between the ages of 25 and 40 who are in the early stages of their careers. The program provides travel grants for teams to exchange visits in paired areas of different countries. For four to six weeks, team members experience the host country's culture and institutions, observe how their vocations are practiced abroad, develop personal and professional relationships, and exchange ideas.

FROM THE BASICS OF ROTARY.....

Benefits and Responsibilities of Club Membership

The club is the cornerstone of Rotary, where the most meaningful work is carried out. All effective Rotary clubs are responsible for four key elements: sustaining or increasing their membership base, participating in service projects that benefit their own community and those in other countries, supporting The Rotary Foundation of RI financially and through program participation, and developing leaders capable of serving in Rotary beyond the club level.

What Rotarians get out of Rotary depends largely on what they put into it. Many membership requirements are designed to help members more fully participate in and enjoy their Rotary experience.

Rotary's Guiding Principles

Throughout Rotary's history, several basic principles have been developed to guide Rotarians in achieving the ideal of service and high ethical standards.

Object of Rotary First formulated in 1910 and adapted through the years as Rotary's mission expanded, the Object of Rotary provides a succinct definition of the organization's purpose as well as the club member's responsibilities. The Object of Rotary is to encourage and foster the ideal of service as a basis of worthy enterprise and, in particular, to encourage and foster:

FIRST The development of acquaintance as an opportunity for service;

SECOND High ethical standards in business and professions; the recognition of the worthiness of all useful occupations; and the dignifying of each Rotarian's occupation as an opportunity to serve society;

THIRD The application of the ideal of service in each Rotarian's personal, business, and community life;

FOURTH The advancement of international understanding, goodwill, and peace through a world fellowship of business and professional persons united in the ideal of service.

ALSO A BIG THANK YOU TO GI ROTARY FROM.....

Grosse Ile was honored by a return visit of the Right Reverend Zebedayo Daudi, Bishop of the Mbulu Lutheran Diocese in North Central Tanzania. This was the Bishop's second visit to Grosse Ile, the first some four years ago. Rotarians Bill Swasey and Ted Aller helped fill his days with us as part of his visit to Michigan. Thursday evening included his presentation to the Club's regular meeting. On Friday, September 25th, Bill arranged for the Bishop's presentation to three AP classes at the Grosse Ile High School, two before lunch and one after. The two before lunch were well and attentively attended. The one after lunch was "standing room only" as the word about this charming man had made the rounds at the High School. Friday evening included a reception at Grosse Ile's St Thomas Lutheran Church, where Bob Figi recorded the event with his camera. Something of note is that during the Bishop's first visit, GIRC PP Bill Swasey learned of a need for hearing aids for a school for the deaf operated by the Mbulu Diocese. With the Rotary Foundation's Matching Grant program and a ton of hard work with the "host club" in Tanzania, they have closed the project and have provided hearing aids to help children actually hear their parents for the first time in their lives. Talk about an uplifting experience.



All GI PPs Rotarians greet Bishop Zebedayo Daudi, Mbulu Lutheran Diocese, Tanzania (L to R): Ted Aller; Bishop; John Strain; PP Dick Withey, Woodhaven/Brownstown; Bill Swasey & Pete Rock; and, Fred Karn, Lincoln Park.



Bishop Daudi presents Ted Aller a traditional Cloth from Tanzania & shows Ted how to hold "The Good Book".

Note 1: Bill Swasey just finished a Matching Grant program with a School for the TZ.

Note 2: Photos from Bob Figi, St Thomas Church, Grosse Ile..



Article Written by John Strain
Pictures by Bob Figi

The Four-Way Test

The test, which has been translated into more than 100 languages, asks the following questions:

Of the things we think, say or do

- ✱ Is it the TRUTH?
- ✱ Is it FAIR to all concerned?
- ✱ Will it build GOODWILL and BETTER FRIENDSHIPS?
- ✱ Will it be BENEFICIAL to all concerned?

