

NEWSLETTER OF THE GROSSE ILE ROTARY CLUB

Box 125, Grosse Ile, MI 48138

Club website: www.gircweb.org

District website: www.rotary6400.org

FOR MEETINGS OF: 09/03/2009 & 09/10/2009

Board Members 2009 – 2010

President	Dale Klemans
President Elect	Charlie Worden
Secretary	Bambang Soedarjatno
Treasurer	Ron Peltier
Past President	Ted Aller



Board Members At Large 2009 – 2010

Dave Sims
Roberto Sanchez
Allen Hickman



REMEMBER.....

NO MEETING THIS COMING THURSDAY, SEPT 17TH
SHOW UP AT THE.....

CLAM BAKE

SATURDAY, Sept 19th

Hickory Island Pavilion, Grosse Ile

COCKTAILS 6:30 PM ~PROGRAM 7:00 PM

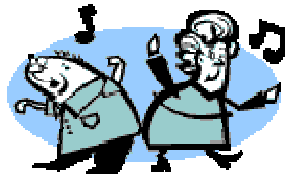
MENU:

Main course selection: **STEAK (20oz.) OR SALMON (12 oz)**

- o Appetizers, Corn on the cob, & Steamed Mussels
- * Clam Chowder, Roll, & Salads
 - Beverages (Soda, Beer, Wine, Etc.)
 - * Desserts

Cost: \$30 Per Person (based on market cost that week)

BRING YOUR DANCING SHOES!



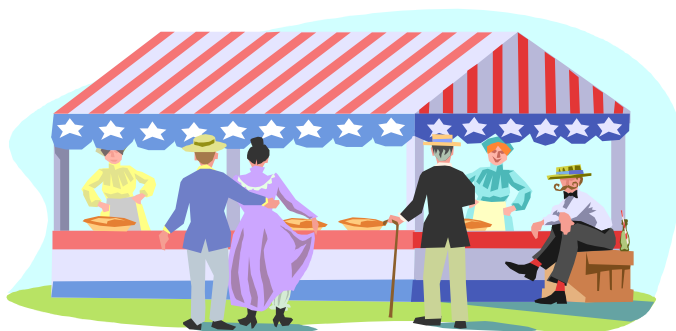
THERE WILL BE DJ, KARAOKE, DANCING!

FUN, LAUGHS, FELLOWSHIP

UP-COMING MEETING PROGRAMS:

9/17/09 NO MEETING
9/19/09 Clambake 6:30 PM
9/24/09 Board Meeting 5:30 PM
9/24/09 Hungarian Group Exchange Committee

THIS PAST SATURDAY ON MACOMB STREET
ROTARY ISLAND SHOWCASE
SATURDAY, SEPTEMBER 12



Co-chaired by: Deb Green & Alan Hickman



Grosse Ile High Drum Line



Co-Chair Deb Green &
GI Trustee Pam Frucci

UPCOMING DISTRICT 6400 EVENTS:

9/23/09

Governor's Golf Outing, Lakes of Taylor Golf Club, Taylor, MI

For many more District Events, sign on to: www.rotary6400.org

FEATURED PROGRAM'S

9/03/2009

Addictions:

Dr. William Taylor, D.O

Definition:

Addiction is a dependence on a behavior or substance that a person is powerless to stop. The term has been partially replaced by the word *dependence* for substance abuse. Addiction has been extended, however, to include mood-altering behaviors or activities. Some researchers speak of two types of addictions: substance addictions (for example, [alcoholism](#), drug abuse, and [smoking](#)); and process addictions (for example, gambling, spending, shopping, eating, and sexual activity). There is a growing recognition that many addicts, such as polydrug abusers, are addicted to more than one substance or process.

Description:

Addiction is one of the most costly public health problems in the United States. It is a progressive syndrome, which means that it increases in severity over time unless it is treated. Substance abuse is characterized by frequent relapse, or return to the abused substance. Substance abusers often make repeated attempts to quit before they are successful.

In 1995 the economic cost of substance abuse in the United States exceeded \$414 billion, with health care costs attributed to substance abuse estimated at more than \$114 billion.

09/10/2009

John F. Robbins, MBA, CFP®

Principal, JFR Financial Services, Inc., Trenton, MI

In 1980 John saw a growing need for qualified professionals to help people with their personal and business financial needs. He is the Founder and President of JFR Financial Services, Inc. John's desire is: *"to make a difference in people's lives, business and ministries by sharing my gifts and expertise with God's help. My primary gift is administration, which enables me to take a situation and make it work more efficiently. These efficiencies, combined with my financial expertise can be realized in many areas:*

financial, operations, management of others and time." John is committed to pursuing excellence in his profession through on-going research, education and professional counsel. He has helped thousands of people. Let him help you. It could make a world of difference.

